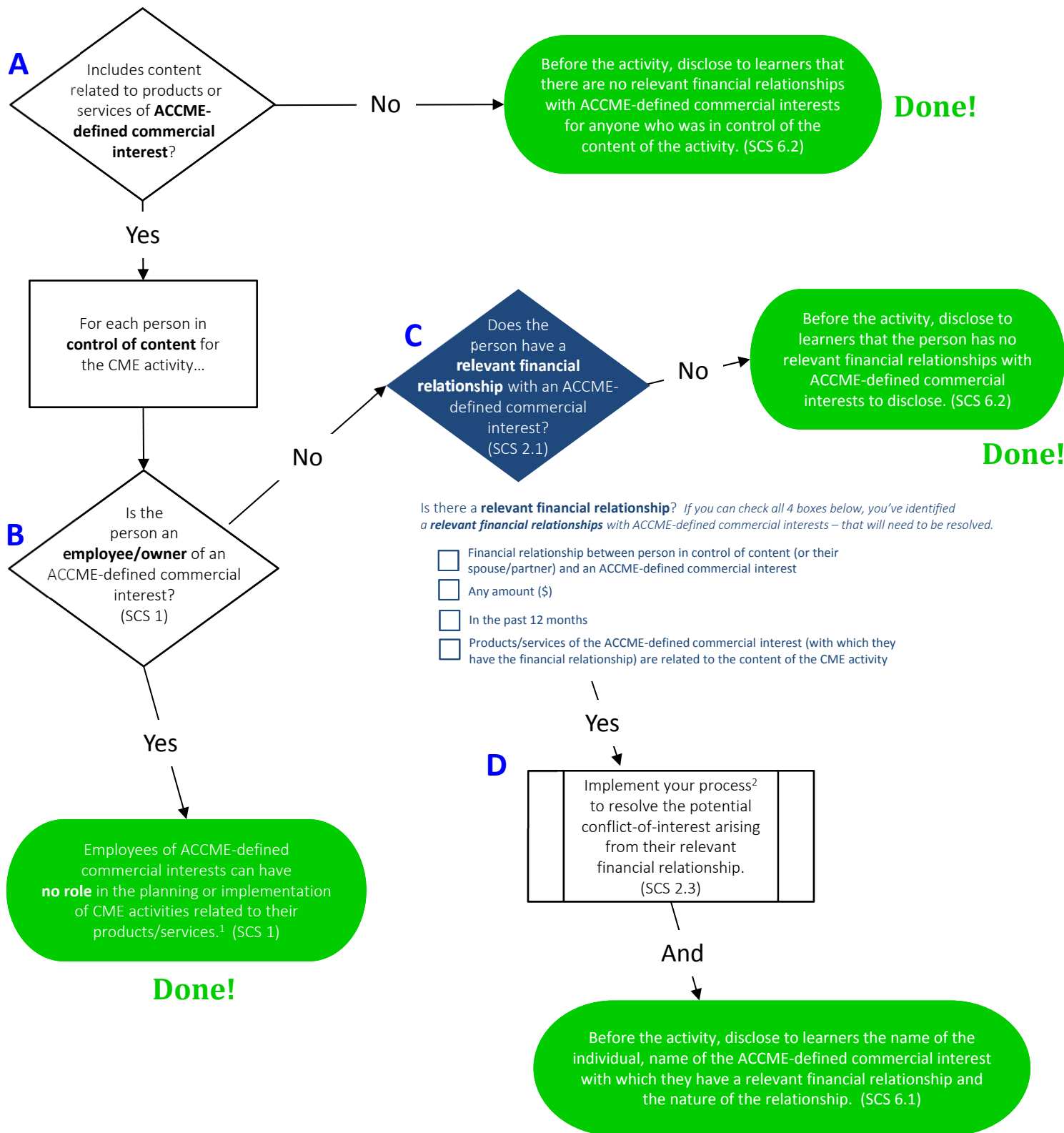


Flowchart for Identifying Relevant Financial Relationships and Resolving Conflicts of Interest in Accredited CME Activities

Start Here...



Footnotes/Resources – When in doubt, check it out!

1. The use of employees of ACCME-defined commercial interests as faculty and planners or in other roles where they are in a position to control the content of accredited CME is prohibited, except in specific situations. For more information, visit: <http://www.accme.org/ask-accme/are-there-any-circumstances-when-employees-accme-defined-commercial-interests-can-be>.
2. There are a range of approaches providers can use to resolve potential conflicts of interests. For more information, visit <http://www.accme.org>.